



Quality Radiation Shielding Products

# Kolga Model A310-TT Lightweight Top Opening Low Background Lead Shield

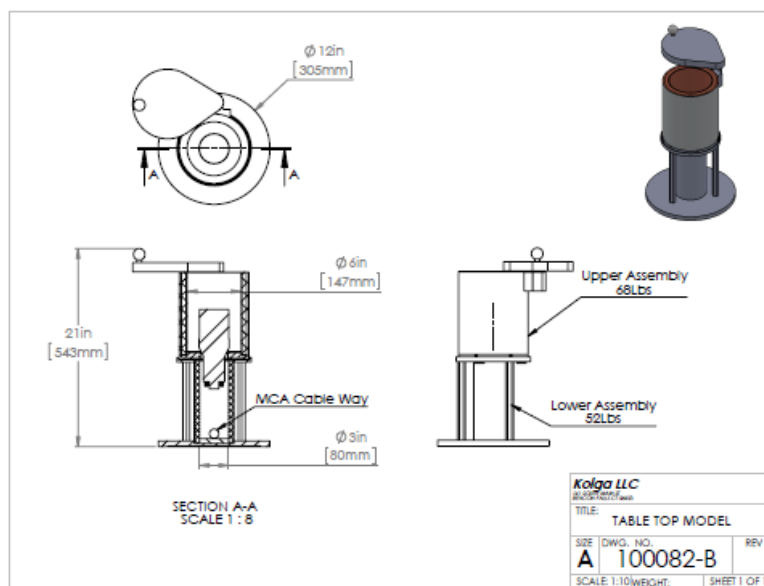


## Description

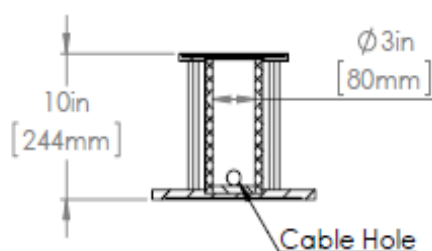
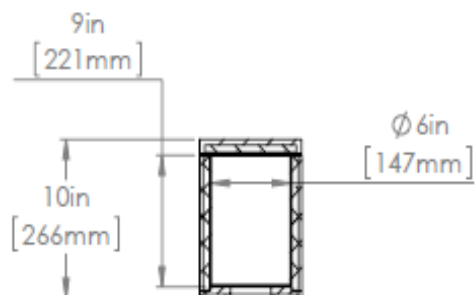
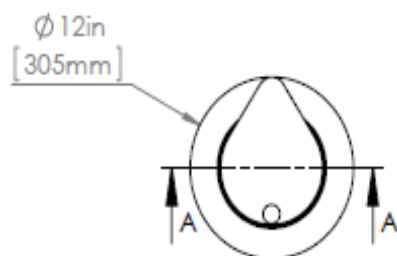
The Kolga Model A310-TT is a 12.7 mm (0.5 inch) high performance copper/tin lined lead shield for NaI detectors. The 12.7 mm bulk shield is made from certified Ultra Low Background DOE Run virgin lead. The graded liner is designed for the suppression lead x-rays and consists of a Ultra Low Background Tin layer of 1 mm (0.040 in.) covered by a oxygen free copper layer of 1.5 mm (0.06 in.). The shield includes a rigid mounting plate to secure the unit to the floor or table for safe operation. The shield can accept a 2x2 or 3x3 NaI detector which is inserted from the top opening into the detector holder for secure mounting. The A310-TT exterior and stand are Anodized Aluminum while all copper components are coated with a clear polyurethane sealer to prevent corrosion

## Specifications

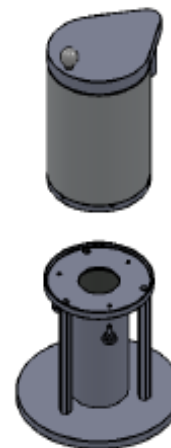
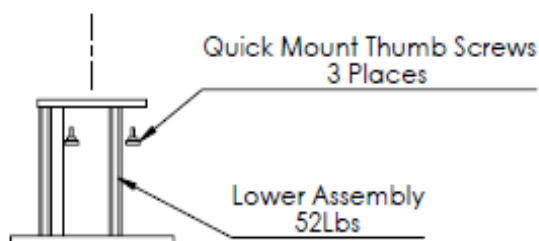
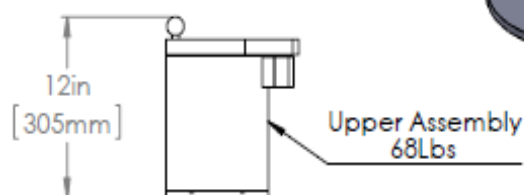
- ◆ Overall: Height 53.34 cm (21 in.) Width 30.5 cm (12 in.)
- ◆ Cavity: Diameter 14.7 cm (5.78 in.) Depth 22.1 cm (9 in.)
- ◆ Outer Jacket – 6.35 mm (0.25 in.) Aluminum.
- ◆ Shield – 12.7 mm (0.5 in.) thick Ultra Low Background DOERUN certified lead.
- ◆ Graded Liner – 1 mm (0.040 in.) Ultra Low Background tin and 1.5 mm (0.06 in.) oxygen free copper.
- ◆ Weight: Shield 30.9 Kg (68 lbs.) Base 23.6 Kg ( 52 Lbs.)
- ◆ Exterior Finish –Black Anodized



## Kolga Model A310-TT Lightweight Top Opening Low Background Lead Shield



SECTION A-A



**Kolga LLC**

141 SOUTH MAIN ST  
BEACON FALLS, CT 06403

TITLE: TABLE TOP MODEL

SIZE	DWG. NO.	REV
<b>A</b>	100082	

SCALE: 1:10	WEIGHT:	SHEET 1 OF
		1

Model A310-TT